



SUPERIOR  
UNIVERSITY



# BSc Civil Engineering

FACULTY OF ENGINEERING & TECHNOLOGY



**RANKED NO. 1** IN  
QUALITY OF EDUCATION  
IN PAKISTAN

WORLD RANK IN  
QUALITY OF EDUCATION  
**101-200**

OVERALL RANK IN  
WORLD'S TOP  
**401-600**

AMONG THE  
**TOP 10**  
UNIVERSITIES OF  
PAKISTAN

# 3U1M<sup>®</sup>

## 3 Years in University and 1 year in Market

3U1M is our unique and distinctive framework which is focused on enabling and empowering the youth to create social and economic impact. This research-informed experiential learning program has been designed to ensure student success by teaching not only theories but their practical implications to equip our students with the skills of 21st-century graduates. This employability ensured program is a milestone in our mission for developing an economically Superior Pakistan.

### Year 2 - Exploration PBL 2

In year 2 students explore the emerging concepts of the relevant industry and gain experiential learning through Project based learning Level 2.

### Freshman Program

A rigorous on-boarding program for a smooth transition to university education through IQ & EQ Accelerators preparing students for entering university life.

### 1M-Market Intensive Year

For the final Market Intensive Year "1M" (one year in the market), we have designed four indigenous career streams i.e., Design Challenge, Startup, Scaleup & Superior Go Global so our students may choose any track according to their aptitude.

## Career Pathways

**Startup:** to become a successful entrepreneur by getting incubated at our **Innovation District 92 (ID-92)**



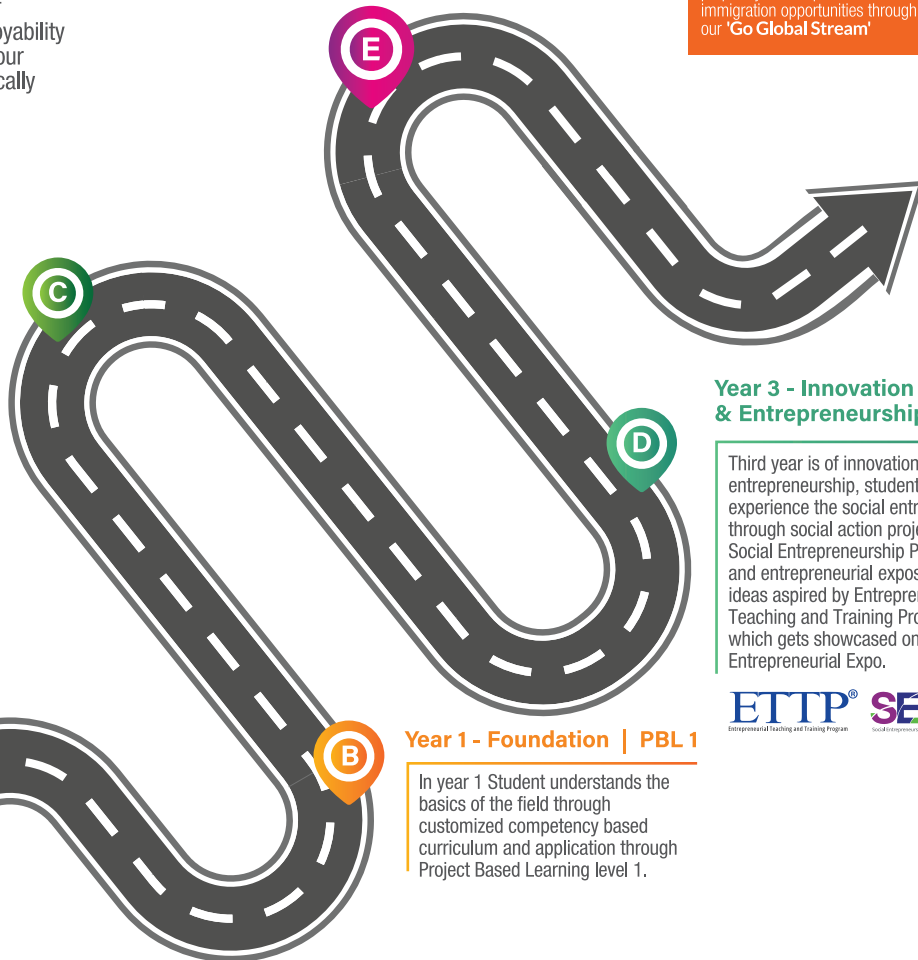
**Scaleup:** to uplift your family business by getting trained at our accelerator "ScaleupPk"



**Design Challenge:** to become a valuable resource for corporate world by solving a real-time industry problem following **Design Thinking** approach



**Superior Go Global:** to prepare you to explore career and immigration opportunities through our 'Go Global Stream'



### Year 3 - Innovation & Entrepreneurship | PBL 3

Third year is of innovation and entrepreneurship, students will experience the social entrepreneurship through social action projects under Social Entrepreneurship Program (SEP) and entrepreneurial exposition of new ideas aspired by Entrepreneurship Teaching and Training Program (ETTP) which gets showcased on Superior Entrepreneurial Expo.



### Year 1 - Foundation | PBL 1

In year 1 Student understands the basics of the field through customized competency based curriculum and application through Project Based Learning level 1.

# BSc

## Civil Engineering

BSc Civil Engineering at Superior University provides in-depth knowledge regarding the core sub-disciplines including structures, and construction management. The excellent faculty helps students develop specific design and professional skills enabling them to nurture their analytical, technical, and decision-making abilities. Extensive laboratory practice coupled with classroom lectures cover the study of materials, geotechnical engineering, concrete, hydraulics, environmental engineering, and surveying.

Course Duration	4 Years
Semesters	8
Total Credit Hours	138

### Eligibility

FSc pre-engineering/DAE or Equivalent with 60% Marks + Entry Test

#### Semester 1

Applied Physics	3
Fundamentals of Electro-Mechanical Engineering	4
Computing Fundamentals	4
Applied Calculus	3
Islamic Studies	2

#### Semester 4

Applied Hydrology	4
Quantity Surveying & Estimation	2
Mechanics of Solids - II	3
Applied Geology	3
Fluid Mechanics - II	4
Geotechnical Engineering - I	3

#### Semester 2

Engineering Survey - I	4
Pakistan Studies	2
Differential Equations	3
Engineering Mechanics	3
Engineering Drawing	2
Construction Materials	3

#### Semester 5

Groundwater	4
Geotechnical Engineering - II	3
Technical Report Writing & Presentation Skills	2
Plain and Reinforced Concrete - I	4
Probability & Statistics for Engineers	3
Structural Analysis - I	3

#### Semester 7

Final Year Project - I	3
Project Management	2
Steel Structures	3
Geo Informatics and Remote sensing	3
Environmental Engineering	4
Structural Dynamics	3

#### Semester 3

Computer Aided Civil Engineering Design & Graphics	2
Advanced Engineering Surveying - II	3
Mechanics of Solids - I	3
Fluid Mechanics - I	3
Numerical Analysis	3
Communication Skills	2

#### Semester 6

Structural Analysis-II	3
Engineering Economics	2
Transportation Engineering	3
Hydraulic Engineering	3
Plain and Reinforced Concrete - II	4
Social Entrepreneurship	2

#### Semester 8

Professional Ethics and Values	2
Disaster Management	2
Design of Structures	4
Irrigation Engineering	4
Final Year Project - II	3
Occupational Health and Safety	1

To accommodate modern trends, University reserves the right to change course requirements, fee, course classifications, course content, class schedule, venue, faculty and the like, whenever it deems appropriate.



# 3U1M<sup>®</sup> WITH GLOBAL EXPERIENCE

## CAREER SCOPE

- Land jobs in buildings and construction companies
- Exponential job opportunities in Aviation, Environmental, Geotechnical, and Marine industries
- Acquire jobs in Petroleum, Tunnelling, Energy, and Power Plant industries

## DISTINCTIVE FEATURES

- Conducive Environment for Interdisciplinary Research
- Internationally qualified faculty boasting exceptional research profile
- Synergised experiential & futuristic learning
- Global exposure for higher education, internship, job or immigration through 3U1M Stream 'Superior Go Global'

To apply online, please visit  
[admissions.superior.edu.pk](https://admissions.superior.edu.pk)  
042-111-00-00-78



### University Campus, Lahore

17-KM, Main Raiwind Road, Lahore.  
Ph: 042-38103777

### Sargodha Campus

10-KM, Lahore Road, Sargodha.  
Ph: 048-211-00-00

### Faisalabad Campus

13-KM Satiana Road, Near Khanuana  
Bypass, Faisalabad. Ph: 041-8792007-8

### Rahim Yar Khan

East Bank Sadiq Canal Road, Darri Sanghi,  
Rahim Yar Khan. Ph: 068-5958009