

▲
**BIGGER
BOLDER
SUPERIOR**
▼



SUPERIOR UNIVERSITY

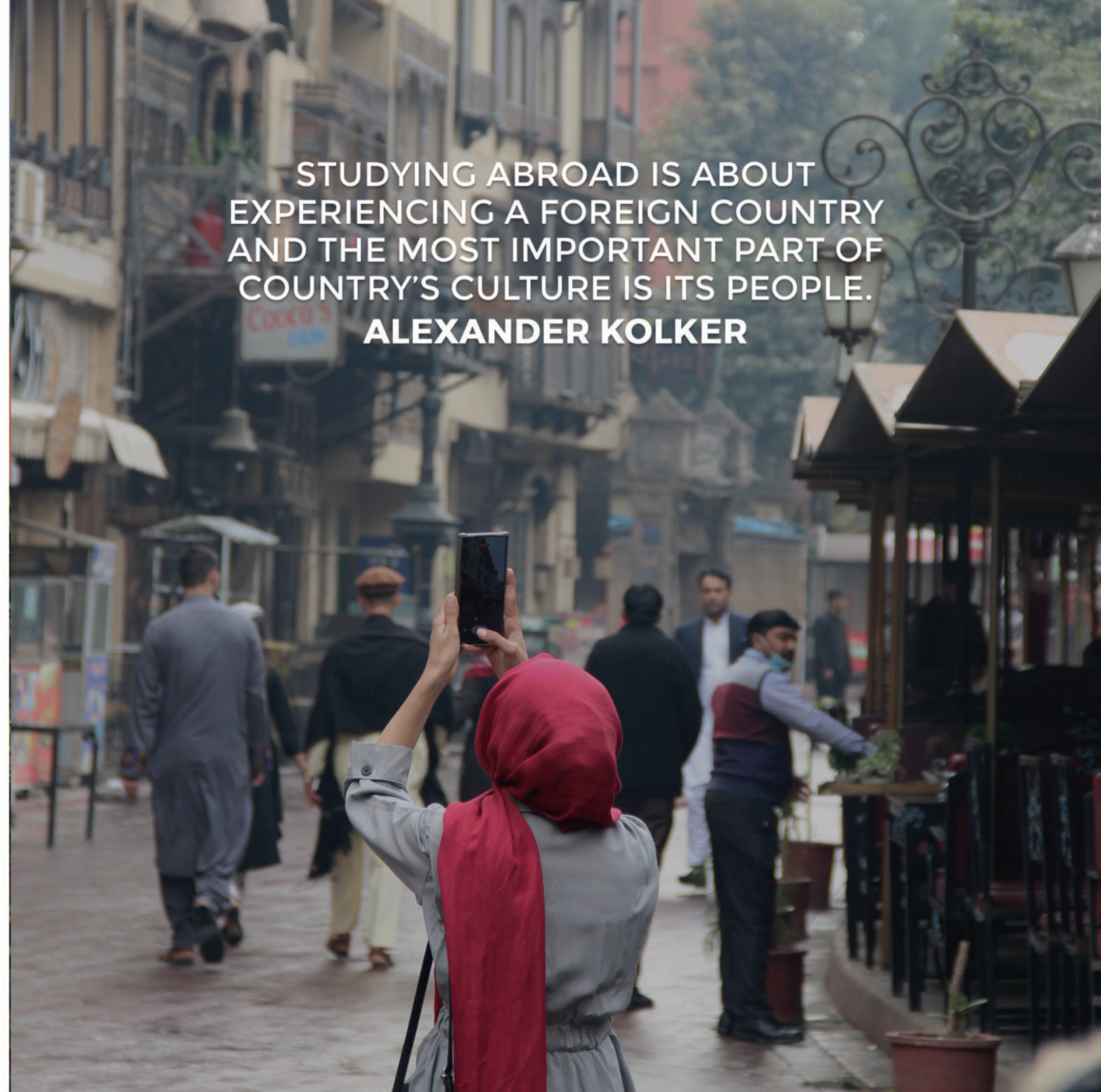
HANDBOOK

I INTERNATIONAL STUDENTS



STUDYING ABROAD IS ABOUT
EXPERIENCING A FOREIGN COUNTRY
AND THE MOST IMPORTANT PART OF
COUNTRY'S CULTURE IS ITS PEOPLE.

ALEXANDER KOLKER



The Year of Global Recognition



OVERALL RANK
301-400

RANKED NO. 1
PRIVATE SECTOR UNIVERSITY
IN PAKISTAN

AMONG THE
TOP 10 UNIVERSITIES
IN THE SUBCONTINENT



CONTENT

- INTERNATIONAL STUDENTS
- ELIGIBILITY CRITERIA
- VISA PROCESS
- PACKING TIPS
- STAYING IN LAHORE
- STAYING SAFE
- CMS STUDENT PORTAL
- OPENING BANK ACCOUNT
- AFTER COMING TO SUPERIOR UNIVERSITY
- EMPLOYMENT OPPORTUNITIES
- LANGUAGE COURSES
- SUPPORT SERVICES
- SUPERIOR SOCIETIES
- AFRICAN STUDENTS ASSOCIATION PAKISTAN
- CONTACT DETAILS





INTERNATIONAL STUDENTS

The foreign students are just like the steel bridges that connect Superior University with the rest of the world. Every year, Superior University proudly welcomes international students. Students are enrolled in different departments; Allied Health Sciences, Faculty of Business and Management Sciences, CS & IT, Faculty of Engineering & Technology, Faculty of Pharmaceutics & Department of Nursing.

Currently, 150+ Foreign students attaining education in diverse disciplines at Superior University.

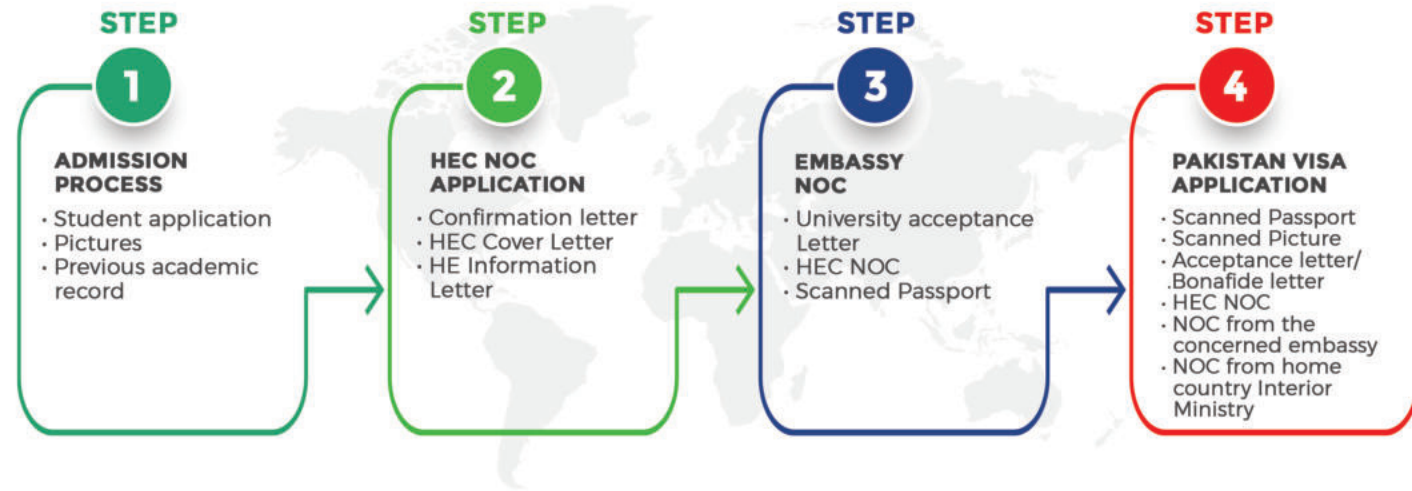
ELIGIBILITY CRITERIA

Admissions Criteria

- 60% marks in previous academic result
- High school certificate (English translated)
- IBCC Equivalence certificate
- Valid Passport
- Academic Year:
 - Fall intake
 - Spring intake
- Application Submission deadline:
 - Fall intake: 31st October
 - Spring intake: 28th February



VISA PROCESS



PACKING TIPS

- Pack as light as possible; you'll be able to get almost all of the things in Lahore.
- You should always carry valuable items in your hand carry luggage.
- Never put cash or other valuables in your check-in luggage

Use this list to make sure you bring everything you need while coming to Lahore.





STAYING IN LAHORE!

ACCOMMODATION

1. **Superior University Hostel (Sharing basis)**
 - Charges PKR 15000 per month (sharing room)
 - Security Fee: PKR 15000 (Refundable)
2. **University Guest House (temporary residence)**
 - Charges PKR 15000 per month (for double sharing room)
 - Charges PKR 20000 per month (for separate room)
 - Security Fee: PKR 20000 (refundable)

STAYING SAFE

Lahore is a safe city with low crime rate, but it's still important to pay attention to your surroundings.

- Don't leave valuable property (like phones, tablets or laptops) unattended in libraries, study rooms or other open spaces.
- If studying late or by yourself, tell somebody. If you feel unsafe or something isn't right contact the Security Section or Police Lahore.

Important Contacts for Emergency:

- Call 15 for police
- Call 1122 for ambulance
- Call 998 for Fire brigade

In case of serious emergency, contact: +923228018001

STUDENT PORTALS CMS & LMS

You can keep a record of attendance, fee, and study material with single click



Superior University
Campus Management Solution

Note: For admission applicants only, Please enter your CNIC (i.e 8230136298285) or Passport # as your User ID. Kindly use Google Chrome to singup and submit application form.

User ID 09233-3403777-4

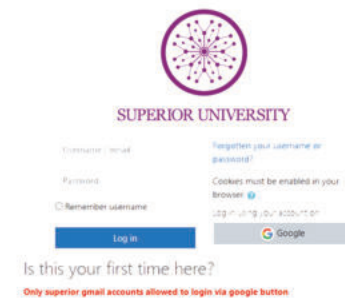
Log in

Reset Password



STUDENT PORTALS LMS

A useful tool to track your cours overview



SUPERIOR UNIVERSITY

Remember me

Forgot your username or password?

Remember username

Log in

Google

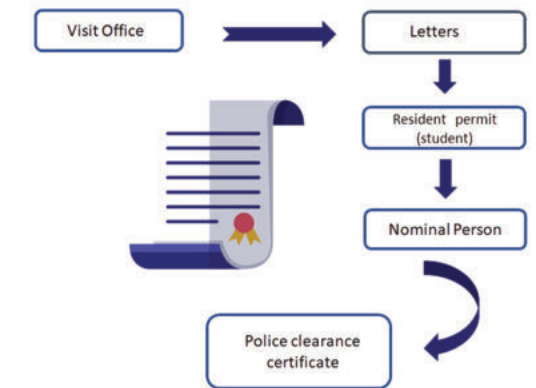
Is this your first time here?
Only superior gmail accounts allowed to login via google button



OPENING BANK ACCOUNT

- BONAFIDE LETTER FROM UNIVERSITY
- PASSPORT COPY
- VISA
- BONAFIDE LETTER
- BANK

POLICE CLEARANCE CERTIFICATE



AFTER JOINING SUPERIOR UNIVERSITY

- UMS account (check regularly for updates)
- Fee submission (2 installments per semester)
- 80% attendance is compulsory in each semester
- You will be dropped out of course if attendance is below 75% in that course
- Mid-term exams have 30% weightage
- Final exam has 40% weightage
- Projects + Assignments have 30% weightage
- It is mandatory to attend all social events organized by university
- Fine will be charged as per university policies on late fee submission





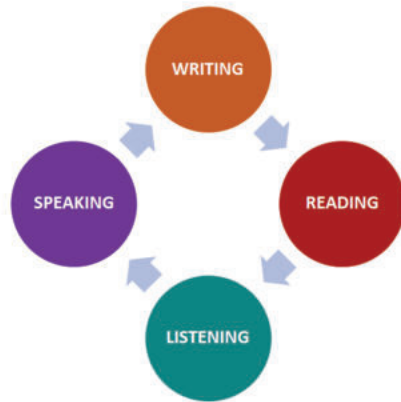
EMPLOYMENT OPPORTUNITIES

ON CAMPUS INTERNSHIP OPPORTUNITIES

- Marketing Department
- Communications Department
- Global Engagement Office

OFF CAMPUS JOB OPPORTUNITIES (through African Students Association)

- Call Center
- Banking
- Hospitals

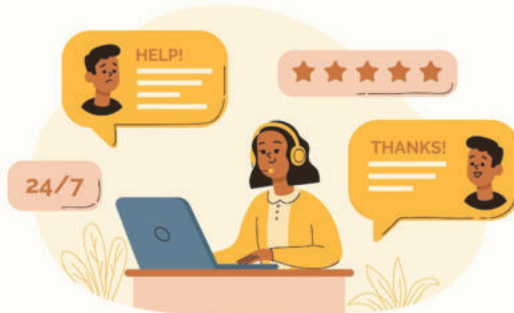


ENGLISH LANGUAGE COURSE/ URDU LANGUAGE COURSE

- Fall intake: December
- Spring Intake: April
- Duration of Course: **3 months**
- 2 lectures weekly

SUPPORT SERVICES

- Teacher/department
- Language barrier in lectures
- Formal documentation
- Opening of bank account
- Issuance of Sim card
- Accommodation or any other matter



ENSURING STUDENT SUCCESS THROUGH MEANINGFUL ENGAGEMENT

OEC

OFFICE OF ENGAGEMENT
AND CO-CREATION
SUPERIOR UNIVERSITY

The Office of Engagement & Co-Creation plays a vital role in engaging our students to co-create a vibrant campus experience and nurture their Emotional Intelligence to ensure enduring success in their lives as well as celebrating and projecting Superior's audacious journey toward excellence in learning, innovation, and research to create an ever expanding socio-economic impact. OEC is committed to fostering 21st-century graduates and the leaders of tomorrow who will become job creators, not job-seekers by providing organizational support to a diverse range of student-led activities. In order to effectively engage the student body through meaningful student engagement, we have developed several student-led platforms including Student Voice Leaders (SVL), Departmental Clubs, and Superior Societies where the student leadership is chosen via a series of independent panel interviews and direct as well as representative elections. The core objective of conducting elections is to ensure a sense of collective ownership and integrate grassroots-level feedback across-the-board in order to enrich the academic journey of the student body. In addition to facilitating meaningful student engagement, OEC effectively projects Superior's plethora of projects, collaborations, community development plans, and initiatives to promote research and entrepreneurship in Pakistan as well.



CAMPUS FUN IS ALWAYS A MEMORABLE EXPERIENCE



INCLUSIVITY IN DECISION MAKING



Our Student Voice Leaders reflect vision, mission and values of our institution. They are potential leaders of tomorrow who can lead us towards a Superior Pakistan. From an ordinary student of a batch to an SVL, life changes 360° and mindset tilts toward facilitating people around.

SVLs are chosen through a process that involves meeting an eligibility criterion, class elections, and final interviews. Their core responsibility is to raise students' voice at relevant platforms including prestigious statutory bodies such as board of studies (BOS), board of faculty (BOF) and academic council. They also act as collaborators of University Leadership in disseminating University philosophy among the students.

YOU NEED TO
LOVE WHAT YOU DO!



African Students Association

African Student Association is one of the landmark initiatives of Superior University, aimed at building a global platform for foreign students studying in Pakistan. It manifests our agenda to develop greater acceptability and support for celebrating cultural diversity in higher education. We are also facilitating our foreign students with multiple scholarships and future settlement opportunities in Pakistan.

Art, Freedom & Creativity
Change Societies Faster than Politics

Superior Societies are meant to equip students with EQ competencies so that they can raise the flag of Superior University high. The mission is to spot, nurture and showcase the exceptionally talented students globally. We encourage students to participate in a variety of physical and intellectual activities. Superior Societies provide them the opportunity to participate in activities, creating virtual and real-life environments that directly contribute to student success in the areas they love to explore.





AFRICAN STUDENTS ASSOCIATION PAKISTAN

SCHEDULE OF ACTIVITIES

Month	Events
January	Bar BQ & Bonfire Night Tour to Wagha Border
February	Football league City Tour
March	Cultural Festival
April	Iftar Party
May	Talent Show Football Screening
June	Tournament PUBG
July	Pool Party
August	Pakistan Independence Day
September	Trip
October	Football League with other universities
November	Pakistan Village Day Life in Superior
December	Responsible Party





Contact Details

+923231485898

@GlobalEngagementOffice

global@superior.edu.pk

Global Engagement Office,
First floor, Admin block,
Superior University, Lahore

